


2-4 Model		
N° of Turns	Direction	Size
3	-	2
0	*	3
3	+	4

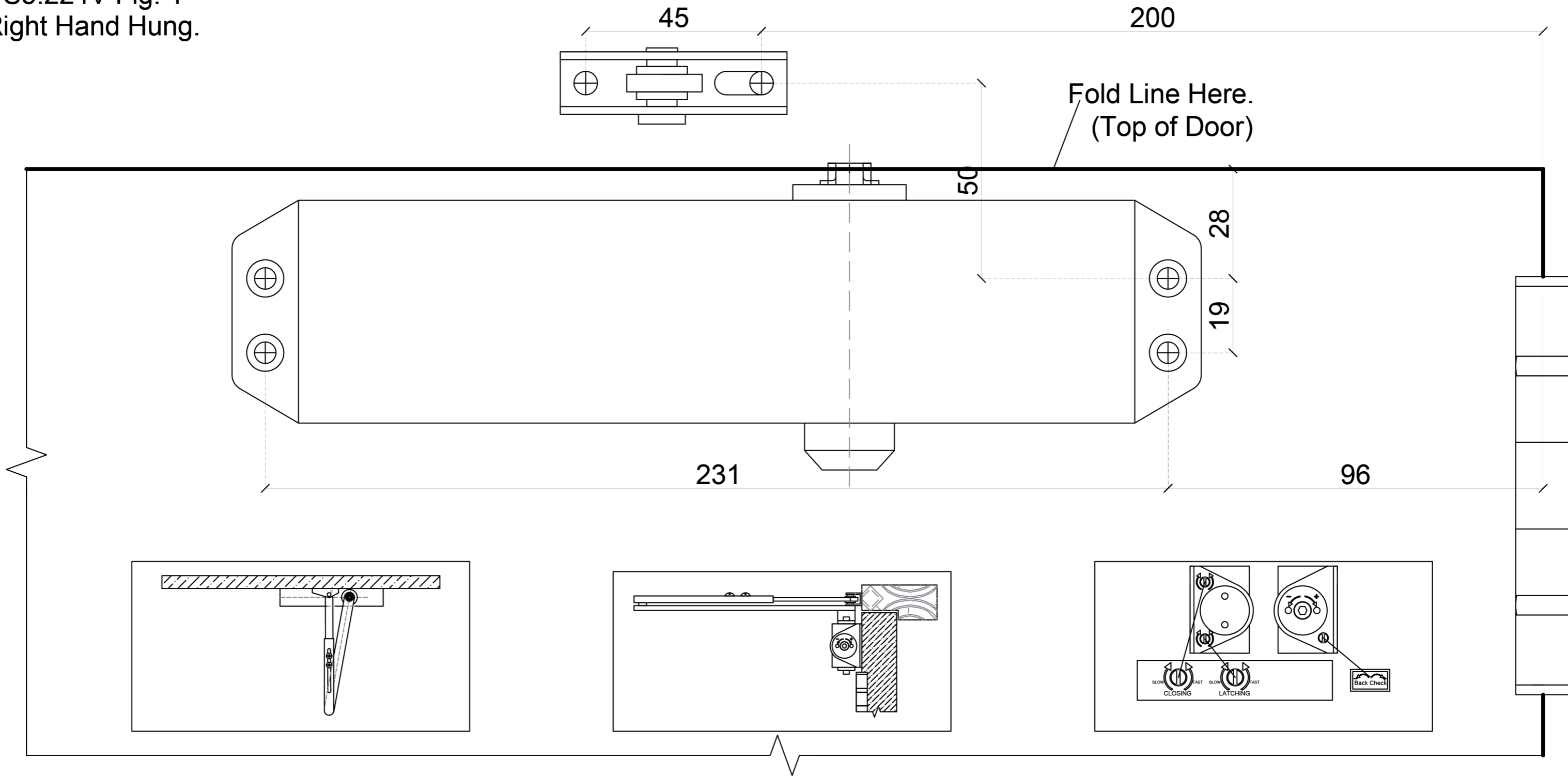

Power Adjustment
 *: FACTORY PRE-SET

This Template Covers Regular Parallel Arm Installation to 180°

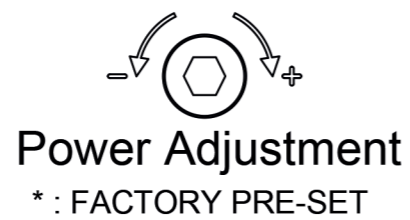
EN1154		
Door Closer Power Size	Recommended Door Leaf Width Max mm	Test Door Mass (Kg)
1	750mm	20 Kg
2	850mm	40 Kg
3	950mm	60 Kg
4	1100mm	80 Kg
5	1250mm	100 Kg
6	1400mm	120 Kg



TS5.224V Fig. 1
Right Hand Hung.



2-4 Model		
N° of Turns	Direction	Size
3	-	2
0	*	3
3	+	4



This Template Covers Regular Parallel Arm Installation to 180°

EN1154		
Door Closer Power Size	Recommended Door Leaf Width Max mm	Test Door Mass (Kg)
1	750mm	20 Kg
2	850mm	40 Kg
3	950mm	60 Kg
4	1100mm	80 Kg
5	1250mm	100 Kg
6	1400mm	120 Kg

